



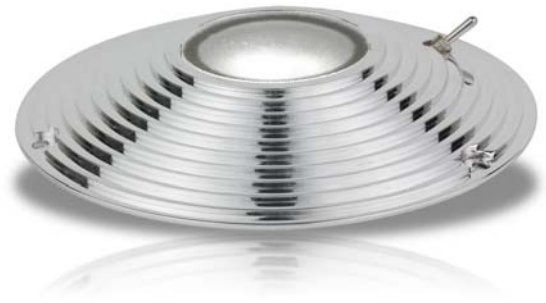
## Technical Data

LLB-10xx / 07xx-21-xx

10-40VDC

Surface Mount Fixture

### 5.5" & 6.75" Indoor Surface Mount Lights



The no-hassle, low-profile mounting design lets you surface mount almost anywhere without cutting large openings. Superb natural color and high light output for distinctive environment. Built-in hi/low dimming (white only).

Designed with Lunasea's robust electronics and temperature monitoring these lights will not affect electronic equipment. Can be dimmed externally.

White LED Light enhances the beauty of your surroundings and the red is powerful enough to read any chart at night.

***Not for outdoor use.***

- 5.5" or 6.75" standard hole pattern
- Flush Mount
- Chrome or Brushed Nickel Finish, Stepped avail in Chrome only
- On/Off switch for high/low or red/white
- 5.5" (140mm) x 0.75" (19 mm)
- 6W Hi / 3W Lo (white)
- 3W (white) / 1W Red
- 10-40VDC